



A simple yet ultra-effective and direct to the point breakout system designed to:

- 1. Filter and eliminate False Breakouts!**
- 2. Eliminate second thoughts of entering in a trending market because you might be thinking that you're late and the market won't give more.**
- 3. Calculates approximate stop and approximate target on breakouts.**

Overview:

This system is designed to calculate different parameters in 5 timeframes namely M1, M5, M15, H1 and H4. When all values are desirable, it gives the signal. **THIS INDICATOR DOES NOT REPAINT. It also does not show past data. Wait for live signal or back test to see it in action.**

The signals are derived from the **M5 (5 minute timeframe). This is where we will monitor our charts for live signals. **THIS SYSTEM DOES NOT GIVE LOTS OF SIGNALS**.**

BEFORE WE START, I WILL EXPLAIN FIRST THE COMPLETE SYSTEM WITH ALL FEATURES IN ORDER FOR THINGS NOT TO BE COMPLICATED. WE WILL START FROM TOP TO BOTTOM.

TRUE BREAKOUT PRO SYSTEM

This system is composed of 2 indicators namely:

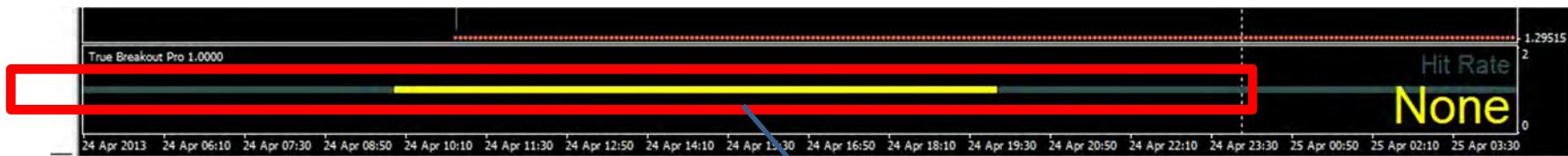
1. True Breakout Pro = the main indicator that gives the signal
2. True Breakout Levels = supporting indicator that gives actual zones in which we can trade.



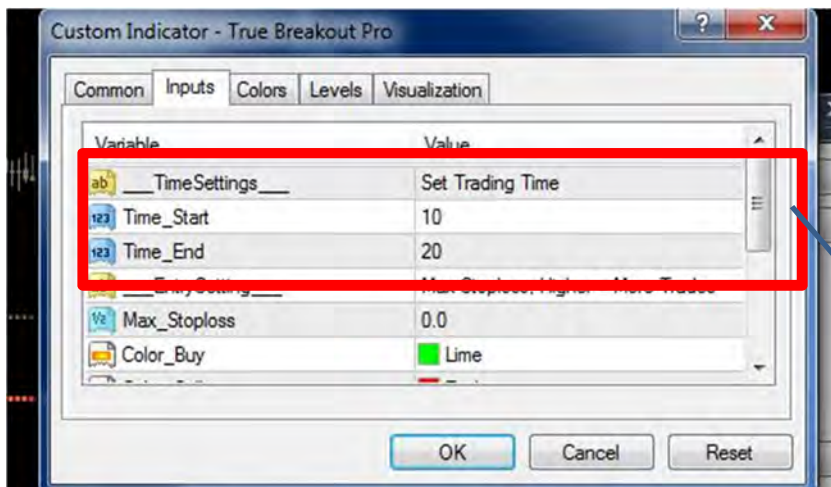
True Breakout Pro

1. SESSION FILTER LINE = is defined by the **Yellow & Gray** Line. The **YELLOW** line is the time where trade signals can happen. The **GRAY** line is where no signals happen.

Since this is a breakout strategy, its best to trade only when market volume is at its peak. The default time is from **GMT 10:00 up to GMT 20:00**. You can change these values if you want in the indicator properties box. Setting "*Time_Start = 0*" and "*Time_End = 24*" will give you signals all throughout the day.



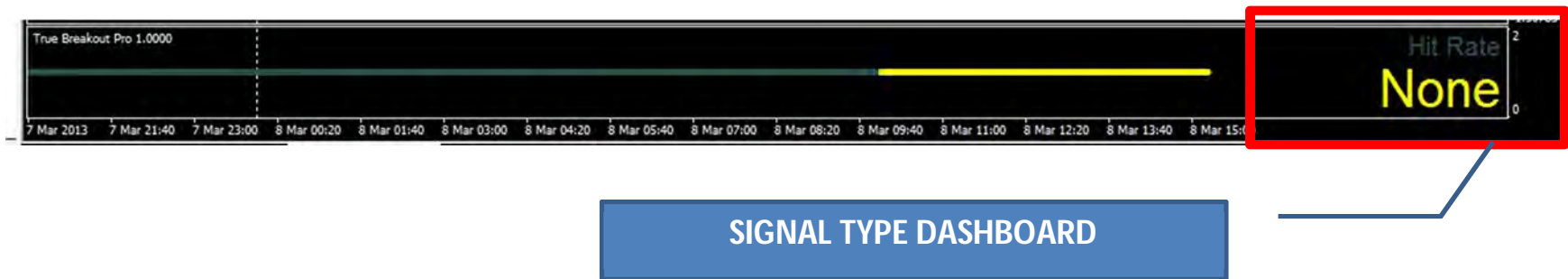
Session Line



Change Session Filter

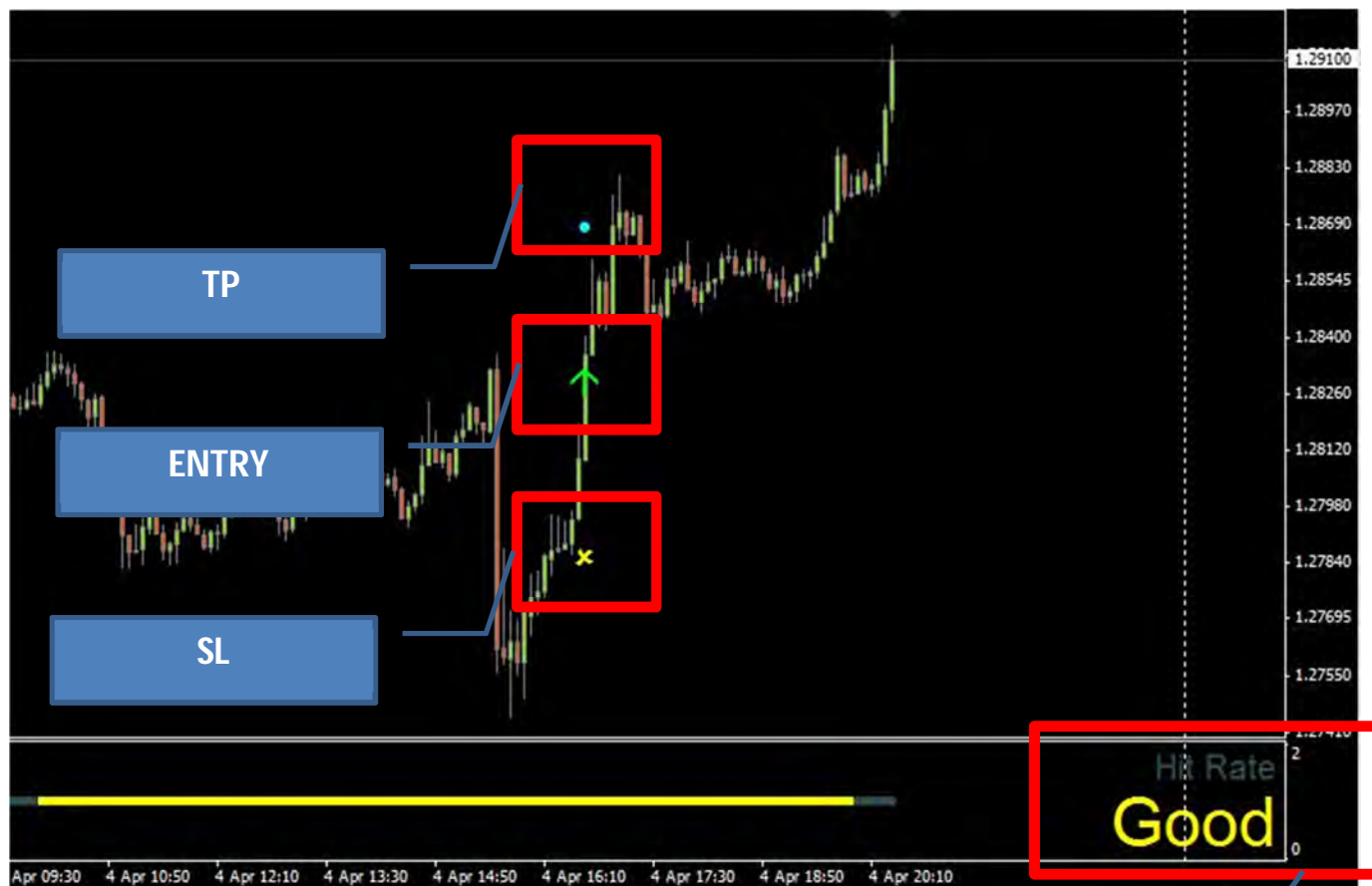
2. **SIGNAL TYPE DASHBOARD** = this is located at the right side of the Session Filter Line. It classifies the signal strength. This system has 2 types of signals namely :

- a. "Good" - has a decent hit rate
- b. "High" - strong signal and has high hit rate



3. SIGNALS = which marks the ENTRY Point, Approximate StopLoss, Approximate TakeProfit. These levels are calculated based on market volatility. The signals are classified into "Good" & "High". As mentioned above. The GREEN arrow as entry, YELLOW cross as StopLoss and AQUA dot as TakeProfit.

BUY SIGNAL in EUR/USD which has a **GOOD Hit rate**.



HITRATE

BUY SIGNAL which has a **HIGH Hit rate.**

The arrow used in High Hit rate Signals are Larger for easy identification.



HITRATE

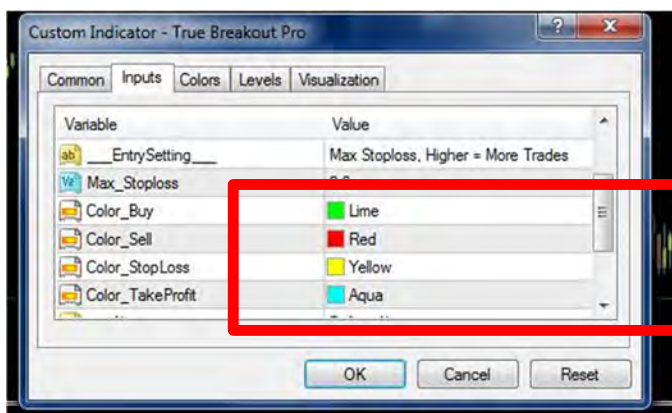
SELL SIGNAL which has a **GOOD** Hit rate.



SELL SIGNAL which has a **HIGH Hit rate.**

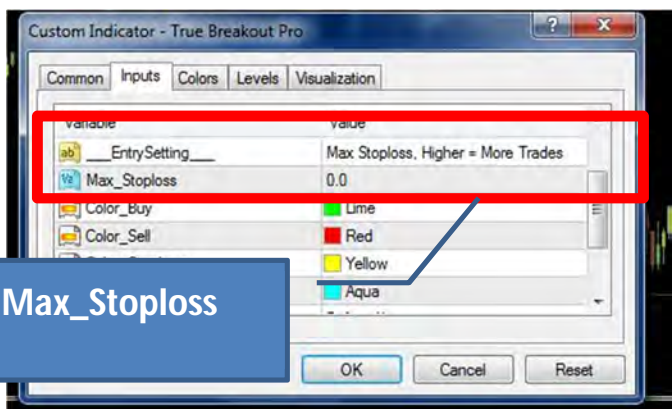


Colors can be changed to desired values

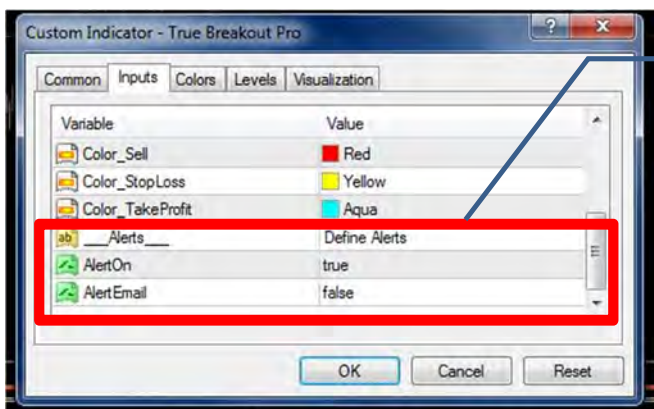


Change colors here

An important feature that filters good trades is the "Max_Stoploss" Value. This feature scans all possible signals and only prints it if the calculated Stoploss is less than our desired "Max_Stoploss". Default is "0". Each pair has its own value. If this value is Higher, it means that there will be more trades, but there will also be more bad trades.



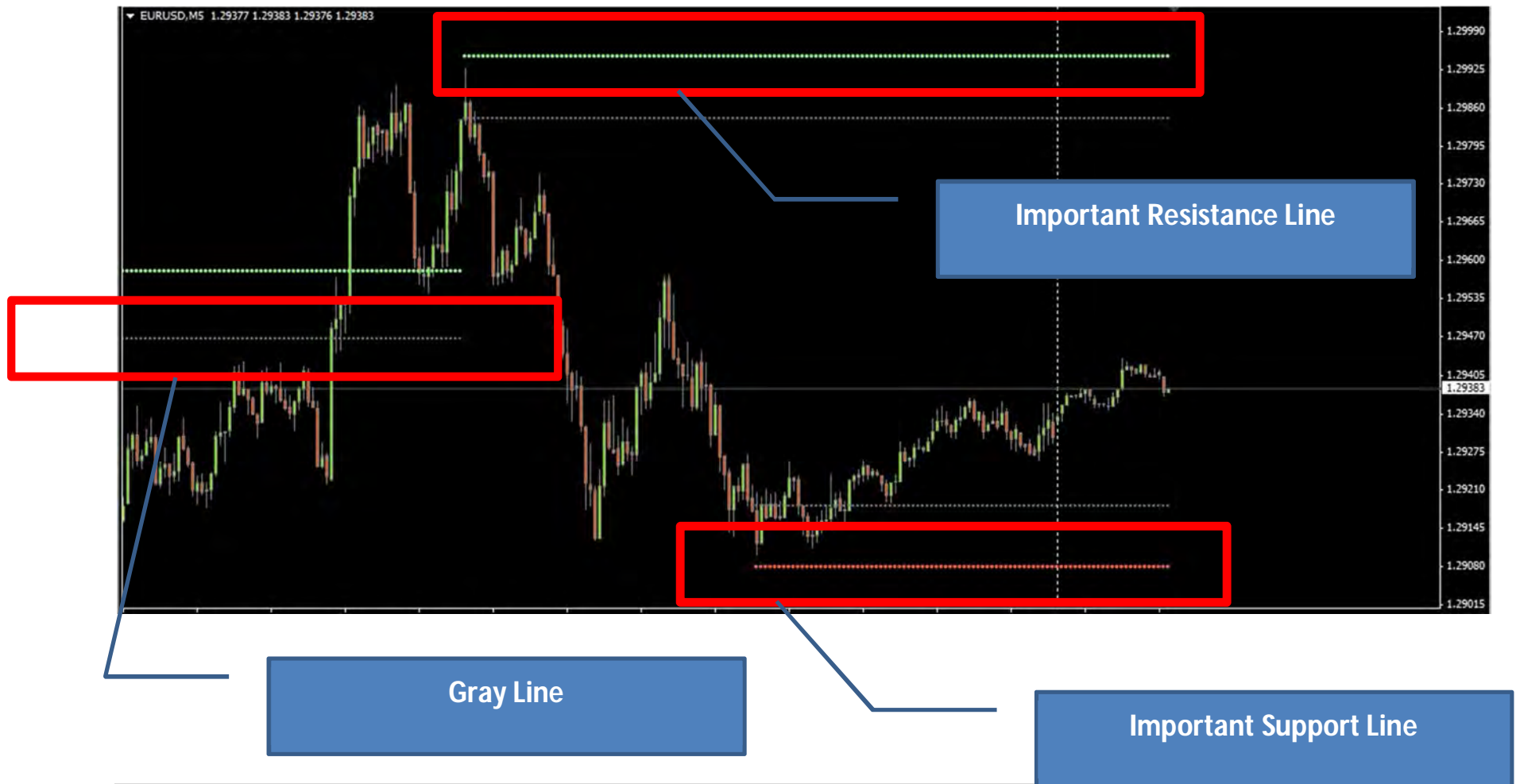
Max_Stoploss



You can also define alerts

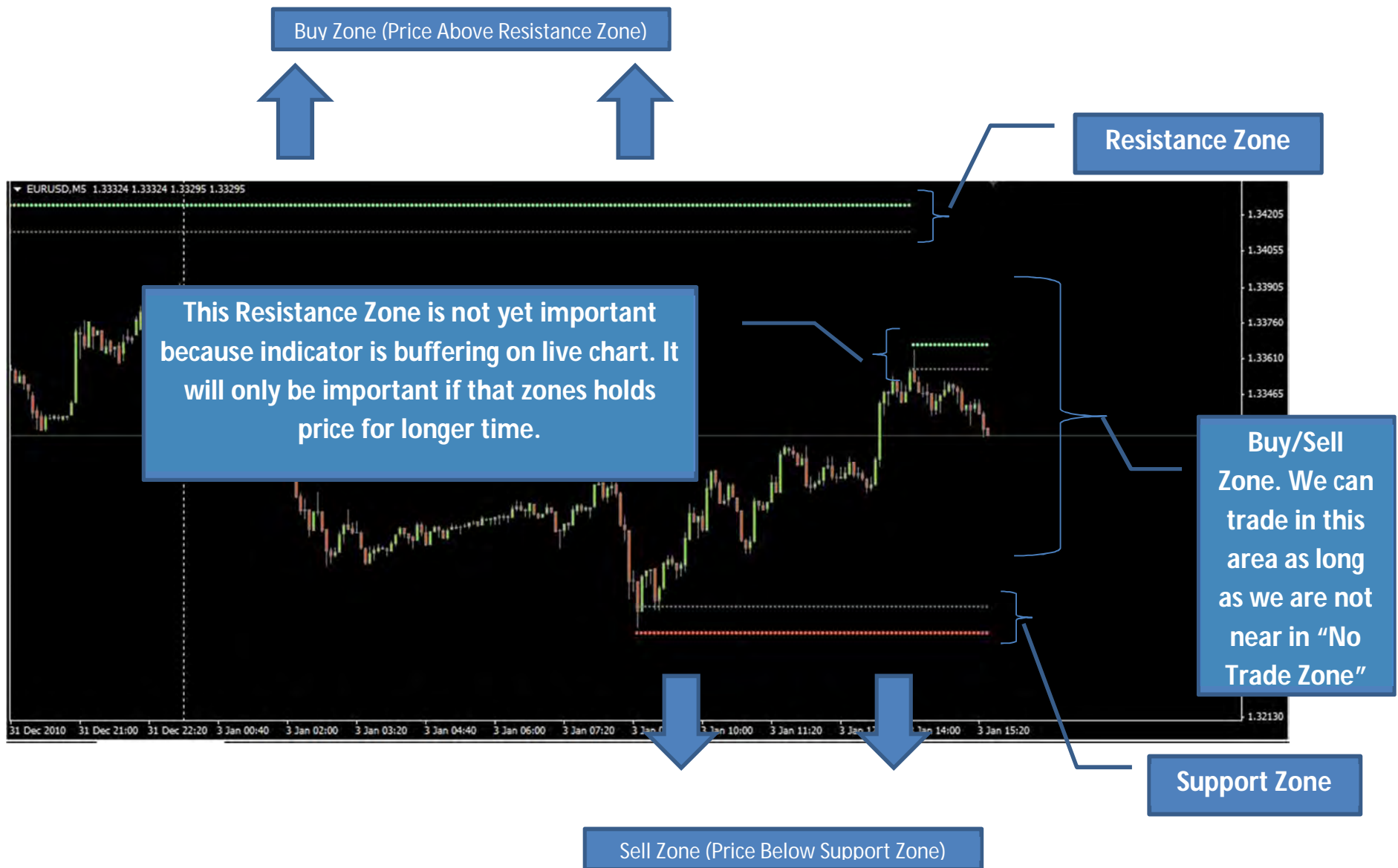
True Breakout Levels

Prints the zones in which we can trade and zones to avoid. It defines important support and resistance lines. Green Line as Resistance and Red line as Support. The Gray line defines the zone we need to avoid.



No Trade Zones. As much as possible, we need to avoid signals on this zone because price may react and bounce off these levels. **Ideally, we can take signals if price actions breaks above or below these zones.** We can also take signals before that zone but the probability will be less. The most important is never trade when the signal happens within the "No Trade Zone".





SYSTEM RULES

1. Don't wait for candle close to enter. ENTER AS SOON AS SIGNAL APPEARS if the conditions below are met.
2. Don't trade on "NO TRADE ZONES" regardless of what signal is present. If a signal breaks the "No Trade Zone", only trade if price has not moved too much away from it, because profit might only be small.
THE IDEAL SETUP IS TAKE THE SIGNAL WHEN PRICE HAS JUST BROKE THE SUPPORT/RESISTANCE ZONE.
That way, there will be more movement to follow.
3. In one Trading session its best to take the fisrt signal. Second signals are ok, provided that it is stronger that the previous.

Example1: If the first signal is a HIGH hitrate signal and you already hit tp, then ignore all the GOOD hitrate signals within the same day.

Example2: if a GOOD hitrate signal happens and you miss the trade. Then afterwards, a HIGH hitrate signal happens, you can take the HIGH hitrate signal because it is stronger. Provided that it is not near on the "NO TRADE ZONE".

Note: The approximate stoploss is marked by "X" on the screen. Its best to add 3-5 pips for our spread.

IDEAL TRADE SETUPS

BUY



SELL



SIGNALS TO AVOID

FALSE SELL SIGNAL



FALSE BUY SIGNAL

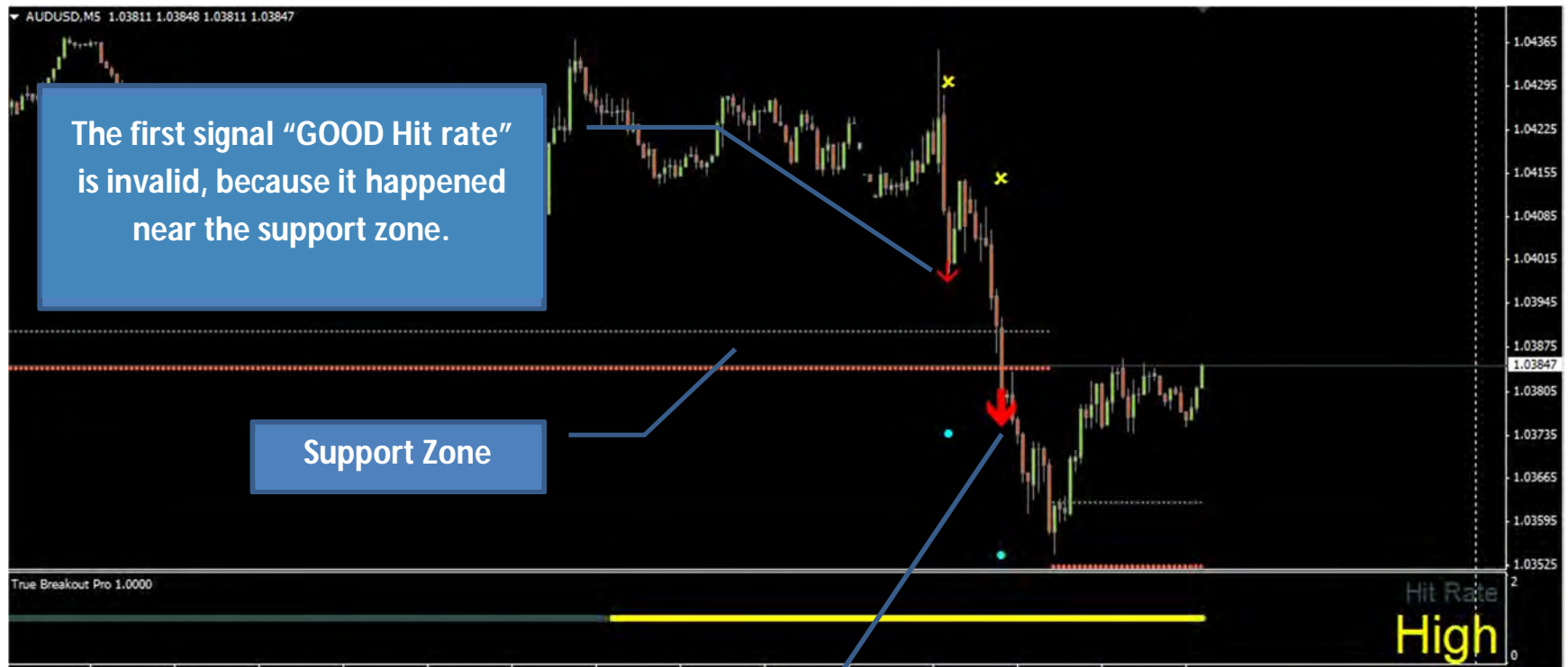


SIGNALS THAT HAPPEN between the Resistance Zone and Support Zone. Technically the Center Zone.

This types are still OK, but the probabilities are smaller compared to the IDEAL signals.



Example of a Possible 2nd entry.



But we can take the 2nd Signal because it is Stronger than the previous. It's a "HIGH Hit rate" signal. The signal also happened when the support zone is broken

Exit Rules

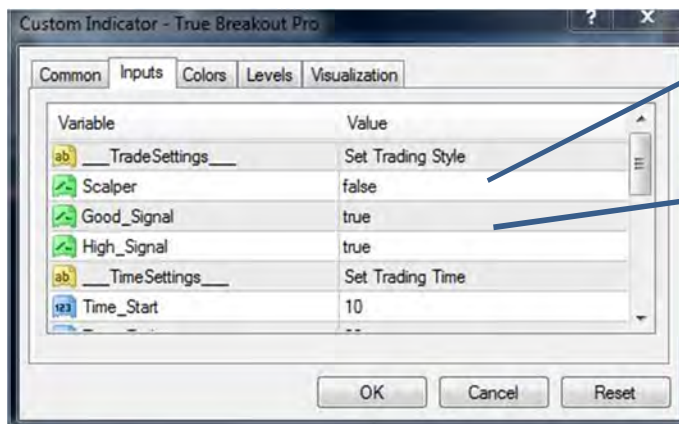
The blue dot is our approximate take profit. It varies based on volatility. To maximize our profit, we can take out 70-80% of our position as soon as price is near the dot. Then trail our remaining position left. Since breakouts often yield more than our takeprofit.

Money Management

Move to Breakeven when in decent profit (more than 15 pips). You can also close your trade if its near a support/resistance zone if TakeProfit is not yet hit.

Additional Settings

Scalper setting can be set to TRUE. This will give 25% more signals but also give more bad signals.



Scalper by default is false

Select signal type you want. By default, "Good" and "High" are set to true.

TRUE BREAKOUT BASIC SYSTEM (FREE)

True Breakout Basic

Same logic as pro but not all features included.

- *Only plots one type of signal, the Good Hitrate Signal.
- *Does not calculate the approximate stoploss and takeprofit values
- *Volaitlity calculations and rules only apply to pair Eur/Usd.

True Breakout Levels

Same, no changes

This is not a holy grail system. This is not a SET and FORGET system. Try the free version and see it works for you. This system is clear , simple, direct to the point and most of all, profitable.

These are the features of the commercial version.

FEATURES	BASIC	PRO	ELITE
Session Time Filter	Yes	Yes	Yes
Scalper Setting	Yes	Yes	Yes
Good Signal	Yes	Yes	Yes
High Signal	NO	Yes	Yes
Approximate StopLoss	NO	Yes	Yes
Approximate TakeProfit	NO	Yes	Yes
True Breakout Levels	Yes	Yes	Yes
Compatible Pairs	1 PAIR	3 PAIRS	6 PAIRS

1 PAIR INCLUDES : EURUSD
3 PAIRS INCLUDE : EURUSD, GBPUSD, AUDUSD
7 PAIRS INCLUDE : EURUSD, GBPUSD, AUDUSD, EURJPY, GBPJPY, USDJPY

Contact: truebreakout@gmail.com

Visit us on: <http://forexquickroute.blogspot.com/>